

Price Monitoring and Analysis Country Brief

Burkina Faso

February 2010

Key Messages

- **Persistent high food prices limit food access increasing people food insecurity.**
- **The Government is still dealing with the rehabilitation of the victims of the flood which caused major damages in September.**
- **Although some agencies agree on a short term improved food security situation, IFPRI warns that it will deteriorate in the long term.**
- **Nothing on latest policy developments.**

Background

In 2008 the total population in Burkina Faso was 15.20 million with an annual growth rate of 2%. Although rural population is about 81%, the contribution of agriculture to the GDP is around 33%. The proportion of undernourished population in 2005 was 10%.

Economic Indicators	View Data
Total Population - 2008 (WB)	15208586
Population growth rate - 2008 (WB)	2%
GNI per capita, \$ PPP - 2008 (WB)	1160
Population below 1\$ PPP per day - 2003 (MDGI)	56%
Rural population - 2007 (WB)	81%
Agriculture, value added (% of GDP) - 2006 (WB)	33%

Food Consumption	
Undernourished Population - 2005 (FAO)	10%
Cereal share in total dietary energy consumption - 2005 (FAO)	73%
Meat share in total dietary energy consumption - 2005 (FAO)	3%

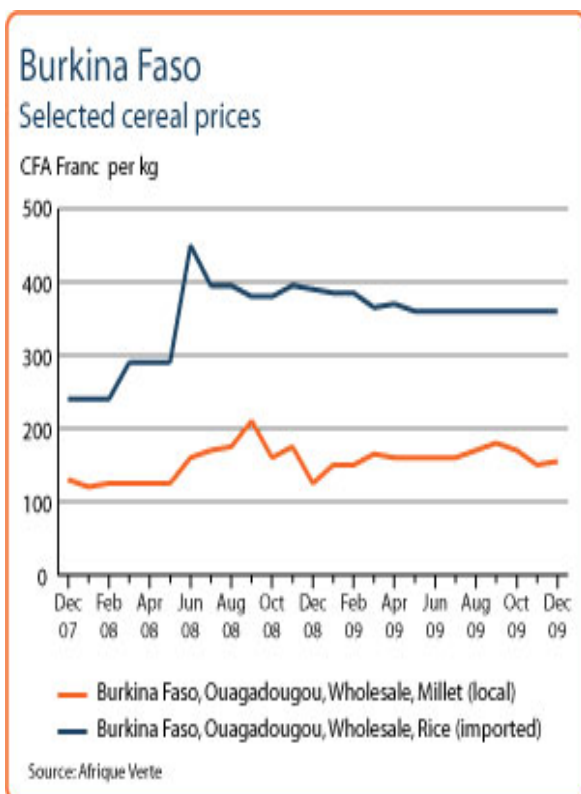
Health Indicators	
Pop. with sustainable access to improved sanitation - 2006 (WHO)	13%
Life expectancy at birth (years) both sexes - 2006 (WHO)	47
Pop. with access to improved drinking water sources - 2006 (WHO)	72%
Prevalence of HIV among adults aged >= 15 years - 2005 (WHO)	2%

Prices

Food access remained difficult in 2009 for a substantial proportion of the population because of persistent high food prices. Cereals prices had shown signs of stabilising in the months between April-Aug, but they rose again in Sept. Despite a decline in prices between Oct and Dec, wholesale millet prices on the Ouagadougou markets in Jan were again CFA Franc/Kg 170; sorghum CFA Franc/Kg 150 as they were in Oct. In Jan 2010, rice prices in Ouagadougou (USD/Ton 762) were 79% higher compared to international price of White Broken Rice, Thai A1 Super, Fob Bangkok (USD/Ton 426).

Natural Disasters, Drought and Conflicts

In September severe flooding in Ouagadougou displaced some 100,000 people. Some 25,000 homes were destroyed and 300 hectares of crops (including vegetable gardens and rice fields) were damaged. The Government is still dealing with the rehabilitation of the victims.



Source: [GIEWS Country Briefs](#)

Refugees and IDPs	2006	2007	2008
Total in the country	1267	1133	1161
Total outside the country	579	822	1042

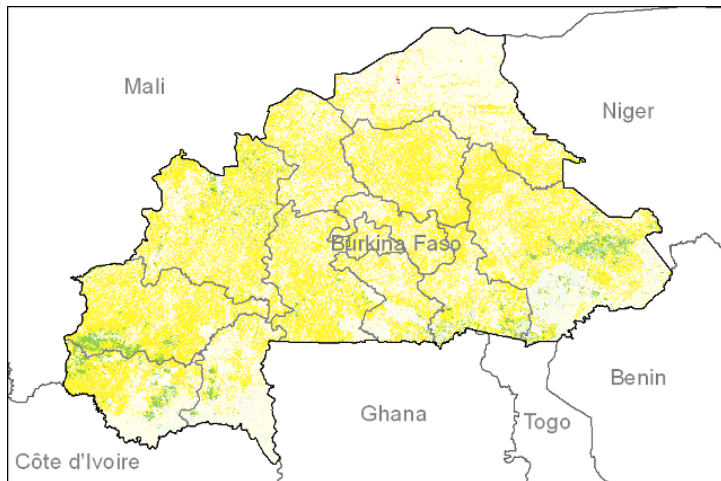
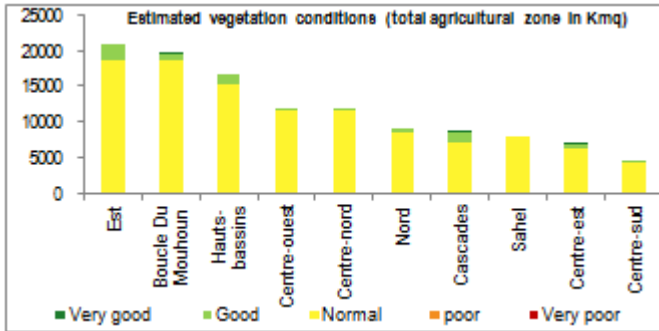
Source: [UNHCR Statistical Online Population Database](#), United Nations High Commissioner for Refugees (UNHCR), Data extracted on 22/10/2009.

Disaster Type (last year)	Date	Location	Alert
No Floods	-	-	-
No Earthquakes	-	-	-

Source: [Global Disaster Alert and Coordination System](#) - 3 = 1000 or more people killed or 800000 or more people displaced. 2 = 100 or more people killed or 80000 or more displaced.

Vegetation Condition

At the middle of the dry season, normal to good vegetation conditions are observed throughout the country. The general indicator of vegetation condition provided below is the relative difference between the NDVI for January 2010 and the average of the last 10 years, calculated on the agricultural zones derived from the GLOBCOVER land cover database (2005).



Source: JRC MARS – FoodSec

Food Security Situation

According to FEWSNET the country is generally food secure. WFP agrees that hunger would be moderately low in the long term, while IFPRI argues that, in the long term, the hunger index would be alarming.

CURRENT EMERGENCY ASSESMENT

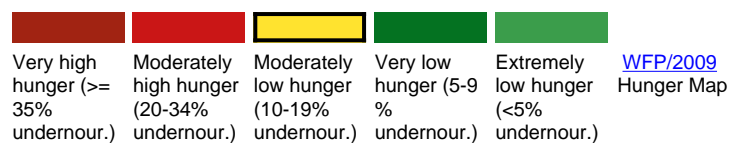
Burkina Faso is not part of the countries in crisis requiring external assistance

[FAO/GIEWS CPFS 2009](#)

The provisional 2009/2010 cereal balance sheet indicates an estimated gross surplus of about 309,689 tons and a net surplus of 566,636 tons. A decline in gross domestic production by about five per cent compared to [...more](#)

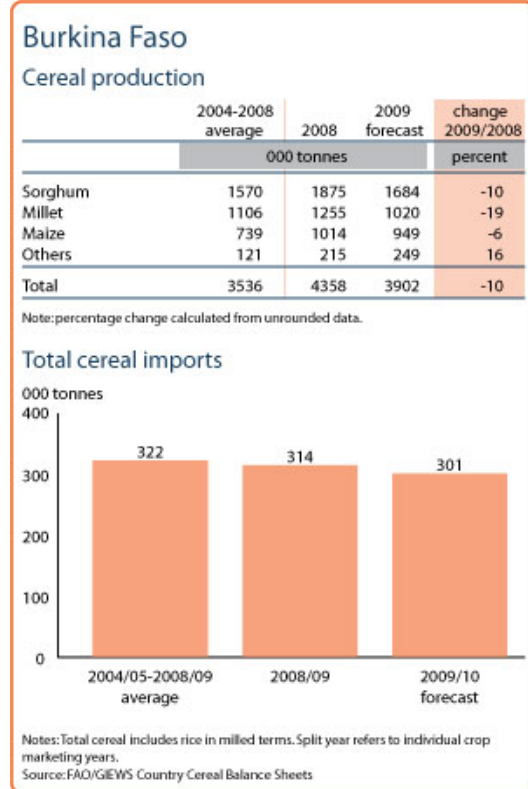
[FEWSNET](#)

SCALE OF HUNGER



Food Balance Sheet

A CILSS/FAO/FewsNet Crop Assessment Mission in October 2009 gave a provisional estimate of the aggregate output of cereals at around 3.9 million tonnes, which is 10% lower than the previous year's record crop but 4% above the 5 years-average. Imports are decreasing and are forecasted at 301,000 tonnes for 2009/2010 compared to 314,000 tonnes in 2008/2009.



Source: [GIEWS Country Briefs](#)

Government Policies

The government has provided input for crop production and in 2008 it suspended VAT and tariffs to reduce the impact of high prices on consumers. Moreover, in response to the floods it has designated 15,000 plots of land where displaced families are to relocate, and will give cash and materials to help people rent or build homes. Nothing on latest policy developments.

Consumer and market oriented measures	Storage facilities; Suspended VAT;
Producer oriented measures	Support to inputs for crop production; Irrigation; Market information;
Trade policy measures	Reduced tariffs on imports; Fertilizers and seeds programmes;
Safety net (increased or introduced)	Food/cash transfers; Input distribution

Different sources

Current events to watch (Click to see the full report)

- [BURKINA FASO: Dying from discrimination](#)
- [BURKINA FASO: Farmers act on climate change](#)
- [BURKINA FASO: Coping with urban flood-displaced](#)

For more information, contact: Information-for-action@fao.org
Website: www.foodsec.org

Powered By the [GIEWS Workstation](#)