

Price Monitoring and Analysis Country Brief

Kenya

May 2010

Key Messages

- Food prices have continued to decrease since the beginning of the year.
- Insecurity persists especially at the borders with Somalia; IDPs are the most affected by dire food insecurity situation.
- The number of people requiring food assistance has decreased to 1.6 million, however very alarming food security conditions are expected throughout the country.
- The government is implementing measures to support producers and providing food assistance to food insecure people.

Background

In 2008, Kenya's total population was estimated to be 38.53 million, with a population growth rate of 2% per annum. The proportion of undernourished population was 32% in 2005 and the prevalence of HIV among adults was estimated at 6%.

Economic Indicators	View Data
Total Population - 2008 (WB)	38534087
Population growth rate - 2008 (WB)	2%
GNI per capita, \$ PPP - 2008 (WB)	1580
Population below 1\$ PPP per day - 2005 (MDGI)	19%
Rural population - 2007 (WB)	79%
Agriculture, value added (% of GDP) - 2008 (WB)	21%

Food Consumption	
Undernourished Population - 2005 (FAO)	32%
Cereal share in total dietary energy consumption - 2005 (FAO)	50%
Meat share in total dietary energy consumption	n.a.

Health Indicators	
Pop. with sustainable access to improved sanitation - 2006 (WHO)	42%
Life expectancy at birth (years) both sexes - 2006 (WHO)	53
Pop. with access to improved drinking water sources - 2006 (WHO)	57%
Prevalence of HIV among adults aged >= 15 years - 2005 (WHO)	6%

Prices

Cereals: Prices of maize, the main staple food, started to decline after peaking in December 2009 at 401 USD/T. In Nairobi, wholesale prices followed a decreasing trend throughout recent months registering 300 USD/T in April and 198 USD/T in May. Compared to last years' figures of April/May 2009 (389/442 USD/T), prices have declined substantially. In Nairobi, maize prices in May were 20% higher than the international prices of US Maize No2 Yellow, US Gulf, which were 164.66 USD/T.

Livestock: Pastoral livelihoods have improved thanks to good weather conditions in drought affected areas that have enhanced milk availability and livestock's body conditions that increased prices/return to pastoralists.

Natural Disasters, Drought and Conflicts

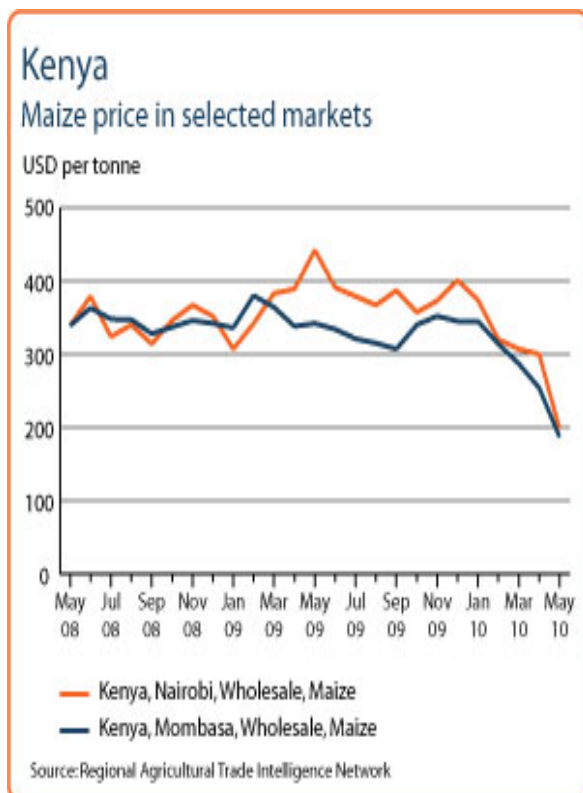
Shocks that strongly impact on livelihoods are insecurity and floods. In several pastoral areas, conflicts due to livestock rustling continue, while civil insecurity along the border with Somalia affects food security especially in Mandera, Wajir and Ijara regions. Security situation is also worrisome in post election crisis areas where currently 80,000 IDPs remain highly food insecure. Moreover, heavy rains caused floods in March in several districts of the country where significant losses of crops, livestock and homes have been reported.

Refugees and IDPs	2006	2007	2008
Total in the country	391046	371495	1180088
Total outside the country	6435	9277	762617

Source: UNHCR Statistical Online Population Database, United Nations High Commissioner for Refugees (UNHCR), Data extracted on 22/10/2009.

Disaster Type (last year)	Date	Location	Alert
Flood	2010-05-08	Western-RiftValley	1/3
Flood	2010-03-07	Western	1/3
Flood	2009-12-21	RiftValley	1/3

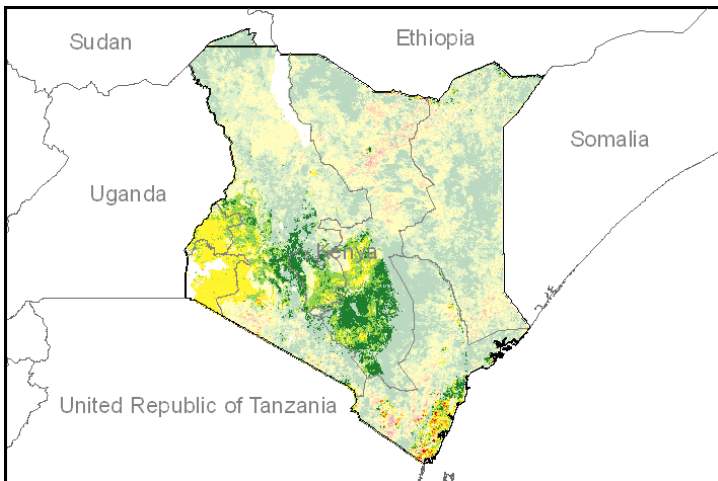
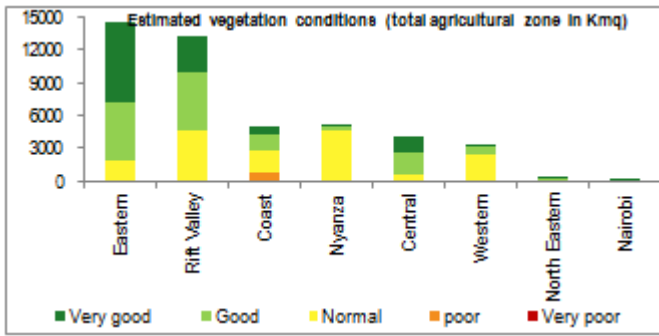
Source: Global Disaster Alert and Coordination System - 3 = 1000 or more people killed or 80000 or more people displaced. 2 = 100 or more people killed or 80000 or more displaced.



Source: GIEWS Country Briefs

Vegetation Condition

At the beginning of the rainy season, normal to very good vegetation conditions are observed for the major part of the country. The indicator of vegetation condition is the relative difference between the NDVI for April 2010 and the average of the last 10 years on the agricultural zones derived from the GLOBCOVER database.



Source: JRC MARS & FoodSec

Food Security Situation

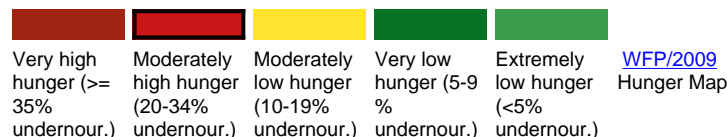
Improvements in food security thanks to the onset of rains after prolonged drought have gradually decreased the number of people in need of food assistance from 3.8 million to 1.6 million. In the short term GIEWS estimates severe localized food insecurity and FEWSNET reports high food insecurity in north and east. WFP and IFPRI predict moderate high and alarming hunger in the long term.

CURRENT EMERGENCY ASSESSMENT



Major food security improvements have occurred across livelihood areas, although high levels of food insecurity remain in some parts of the northwest and northeast pastoral areas due to ongoing high rates of risk...[more](#)

SCALE OF HUNGER

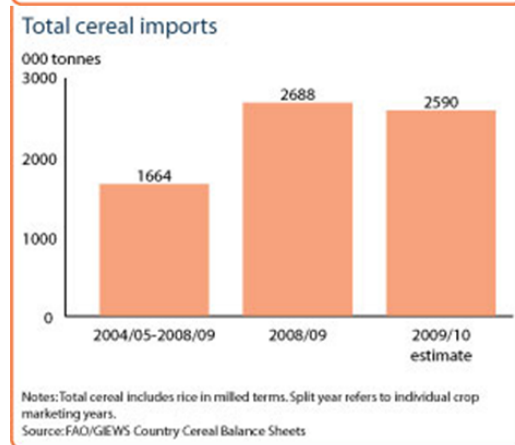


Food Balance Sheet

Total cereal production in 2009 was estimated at 2.8 million tonnes, 9% higher than the 2008 output which was affected by drought. The 2009/2010 imports are forecasted at 2.6 million tonnes. The 2010 long rain production of 2010 is expected to be good thanks to favourable rains.

	2004-2008 average	2008	2009 estimate	change 2009/2008
	000 tonnes			percent
Maize	2678	2160	2370	10
Wheat	326	225	220	-2
Sorghum	100	60	80	33
Others	155	109	129	18
Total	3259	2554	2799	10

Note: percentage change calculated from unrounded data.
Source: FAO/GIEWS Country Cereal Balance Sheets



Source: GIEWS Country Briefs

Government Policies

The government is subsidizing input prices and is planning to implement warehouse receipts programme with guaranteed prices for small farmers. The ministry of Agriculture has launched a distribution programme of 74 mt of seeds. Food based interventions have also been implemented to support most vulnerable groups.

Consumer and market oriented measures	n.a.
Producer oriented measures	Subsidize input prices; prices support; seeds distribution.
Trade policy measures	n.a.
Safety net (increased or introduced)	Food based interventions.

Different sources

Current events to watch (Click to see the full report)

- [KENYA-SOMALIA: Halima](#), "You find out very quickly who your frie..."
- [KENYA: "Good" mould to the rescue](#)
- [In-Brief: Gang rapes on the rise in Kenya](#)
- [KENYA: HIV carries moral stigma - report](#)
- [KENYA: Putting HIV-positive people at the centre of prevention](#)

For more information, contact: Information-for-action@fao.org
Website: www.foodsec.org

Powered By the [GIEWS Workstation](#)

The Linking Information and Decision Making to Improve Food Security Programme is funded by the European Union and implemented by the Food and Agriculture Organization of the United Nations.