

## Price Monitoring and Analysis Country Brief

**Pakistan**

May 2010

### Key Messages

- Cereal prices in major markets have shown a stabilizing trend in recent months.
- Civil insecurity continues to be a problem with an increasing number of people forced to flee their homes.
- Attacks and bombings hamper food assistance in the most affected areas with concerned agencies agreeing on an alarming scale of the level of hunger in the long term.
- The government has plans to increase agricultural productivity and support food insecure people.

### Background

Total population in Pakistan was 166,036 million with an annual growth rate of 2%; the proportion of undernourishment was 23%.

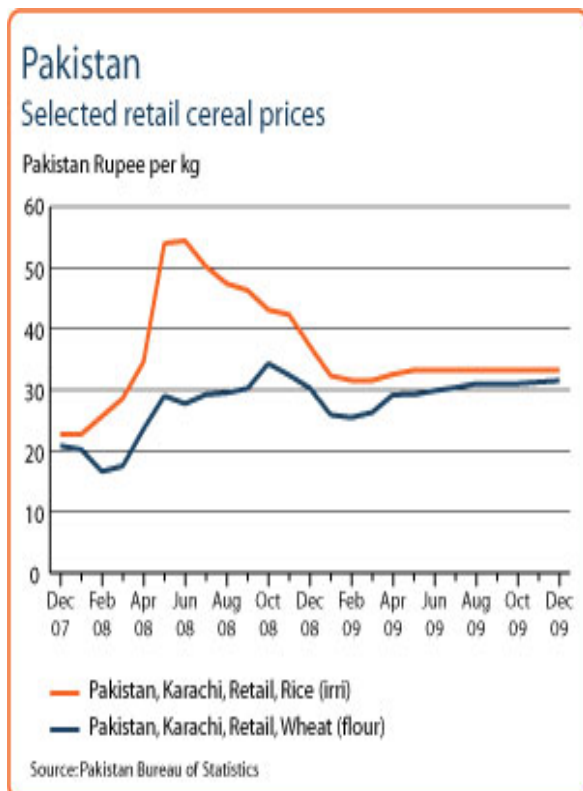
Economic Indicators	View Data
Total Population - 2008 (WB)	166036895
Population growth rate - 2008 (WB)	2%
GNI per capita, \$ PPP - 2008 (WB)	2700
Population below 1\$ PPP per day - 2005 (MDGI)	22%
Rural population - 2007 (WB)	64%
Agriculture, value added (% of GDP) - 2008 (WB)	20%

Food Consumption	
Undernourished Population - 2005 (FAO)	23%
Cereal share in total dietary energy consumption - 2005 (FAO)	49%
Meat share in total dietary energy consumption	n.a.

Health Indicators	
Pop. with sustainable access to improved sanitation - 2006 (WHO)	58%
Life expectancy at birth (years) both sexes - 2006 (WHO)	63
Pop. with access to improved drinking water sources - 2006 (WHO)	90%
Prevalence of HIV among adults aged >= 15 years - 2005 (WHO)	0%

### Prices

In Lahore retail rice prices stabilized at 36.93 rupee/kg between October 09 and April 2010, 28% lower than the levels of a year earlier (47.4 Oct 08/March 09). Wheat retail prices slightly increased to 27.32 rupee/kg in March 2010 but then have fell to 25.47 rupee/kg in April. In Karachi wheat retail prices were stable around 26 rupee/kg in March and April. Rice retail prices have stabilized in Karachi markets at 34.62 rupee/kg in March and April. In Karachi rice prices (409.2 USD/T) were 21% higher than international Rice Thai A1 Super, Bangkok (337.25 USD/T) in April.



Source: [GIEWS Country Briefs](#)

### Natural Disasters, Drought and Conflicts

By mid of April fighting has intensified in North West Frontier Province (NWFP) between the Taliban and Government troops, forcing people to flee areas in the Mansehra District. Insecurity escalated also in the Orakzai Agency of the Federally Administered Tribal Areas (FATA). According to UNHCR, in April, some 85,000 displaced people from Kurram and Orakzai were registered in Hangu, Kohat and Peshawar. OCHA estimated that the conflict displaced 2.8 million individuals; some 1.9 million so far have returned to their homes, while the remaining still live in IDPs camp.

Refugees and IDPs	2006	2007	2008
Total in the country	1047141	2038154	1939700
Total outside the country	32384	40477	194471

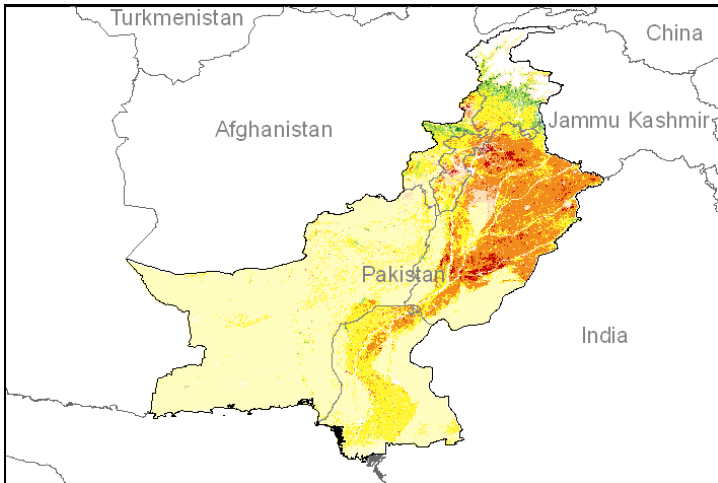
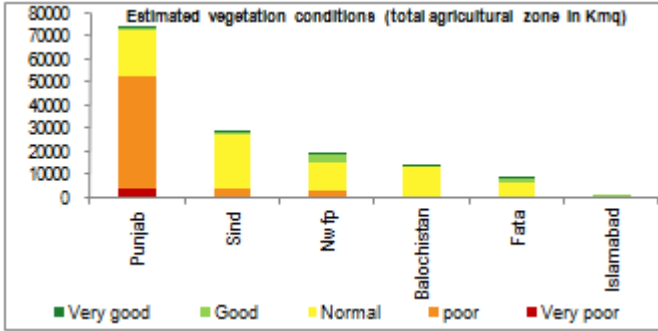
Source: [UNHCR](#) Statistical Online Population Database, United Nations High Commissioner for Refugees (UNHCR), Data extracted on 22/10/2009.

Disaster Type (last year)	Date	Location	Alert
Earthquake	2010-05-06	North-westFrontier	1/3
Earthquake	2010-04-20	North-westFrontier	1/3
Flood	2010-05-08	North-WestFrontier	1/3

Source: [Global Disaster Alert and Coordination System](#) - 3 = 1000 or more people killed or 800000 or more people displaced. 2 = 100 or more people killed or 80000 or more displaced.

**Vegetation Condition**

At the beginning of the crop season, poor conditions are observed in the province of Punjab, in the north of Sind and in the south of Nwfp whereas good conditions are observed elsewhere. The indicator of vegetation condition provided below is the relative difference between the NDVI for April 2010 and the average of the last 10 years on the agricultural zones derived from the GLOBCOVER database.



Source: JRC MARS – FoodSec

**Food Security Situation**

As of March WFP food distribution had reached some 1.4 million people, however food assistance was temporarily suspended at the Kacha camp near Kohat town on the 17 of April due to a bomb attack. GIEWS reports severe localized food insecurity in the short term, while WFP and IFPRI predict moderately high and alarming levels of hunger in the long term.

**CURRENT EMERGENCY ASSESMENT**

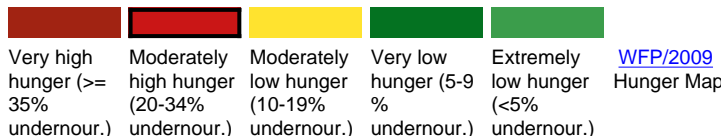


FAO/GIEWS CPFS 2010

Pakistan is not covered by FEWSNET. FEWSNET coverage is limited 14 African countries 1 Caribbean (Haiti) and 1 Central Asia (Afghanistan). Food security status is given for different parts of the country in each case.

FEWSNET

**SCALE OF HUNGER**



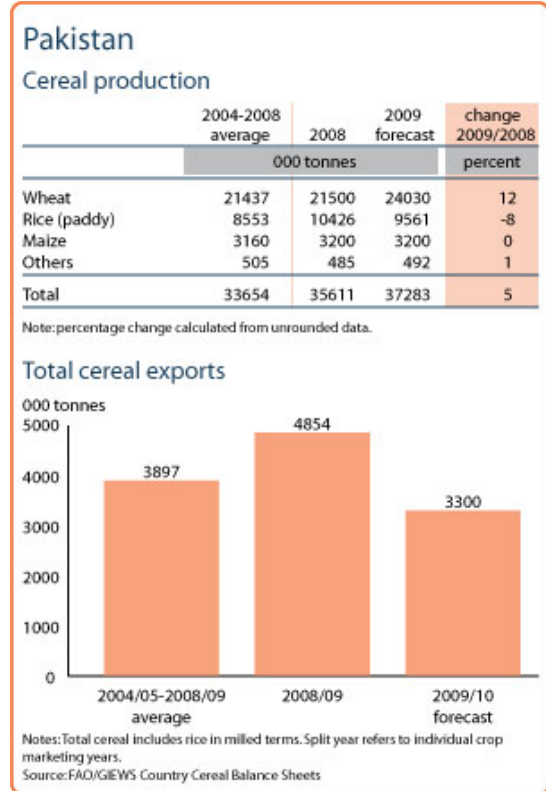
WFP/2009 Hunger Map



IFPRI/2009 GHI

**Food Balance Sheet**

The 2009 rice production was estimated at 9.56 million tonnes (8.3% below 2008, but 12% above the average of the previous 5 years) with export estimated at 2.6 million tonnes in 2009/10. Wheat production was estimated at 24 million tonnes, 3 million tonnes more than 2008. Wheat exports in 2009/10 are estimated at 500,000 tonnes, while total cereal exports are forecasted at 3.1 million tonnes, compared to 1.8 million tonnes in 2008/09.



Source: GIEWS Country Briefs

**Government Policies**

The Govt has announced support price for different crops. It has also made efforts to ensure timely availability of farm inputs at affordable prices. The main purpose of the policy is the development of the agricultural sector to ensure food security. Pakistan has implemented the Social Protection Strategy (NSPS) which consists on a range of safety nets, including social assistance, income and food support programmes.

Consumer and market oriented measures	n.a.
Producer oriented measures	Price support/subsidy
Trade policy measures	n.a.
Safety net (increased or introduced)	Social protection Strategy (NSPS).

Different sources

**Current events to watch** (Click to see the full report)

- [PAKISTAN: Balochistan cyclone-affected protest slow response](#)
- [PAKISTAN: Evacuations begin as Cyclone Phet closes in](#)
- [PAKISTAN: City life offers women new perspectives](#)
- [PAKISTAN: Ahmadi minority fearful after militants kill at least ...](#)
- [PAKISTAN: Ethnic violence stalks Karachi](#)

For more information, contact: [Information-for-action@fao.org](mailto:Information-for-action@fao.org)  
Website: [www.foodsec.org](http://www.foodsec.org)

Powered By the **GIEWS Workstation**