

Price Monitoring and Analysis Country Brief

Kenya

October 2009

Key Messages

- Cereal prices remain at above average levels, severely undermining the purchasing power of poor households.
- Food security is also affected by internal displacement and severe drought.
- Different agencies assess the food security situation in Kenya as deteriorating due to shortfall in food production, high prices and IDPs.
- The government has implemented policies to support producers and consumers, but an estimated 3.8 million people require emergency assistance.

Background

In 2008, Kenya's total population was estimated to be 38.53 million, with a population growth rate of 2% per annum. The proportion of undernourished population was 32% in 2005.

Economic Indicators	View Data
Total Population - 2008 (WB)	38534087
Population growth rate - 2008 (WB)	2%
GNI per capita, \$ PPP - 2008 (WB)	1580
Population below 1\$ PPP per day - 2005 (MDGI)	19%
Rural population - 2007 (WB)	79%
Agriculture, value added (% of GDP) - 2008 (WB)	21%

Food Consumption	
Undernourished Population - 2005 (FAO)	32%
Cereal share in total dietary energy consumption - 2005 (FAO)	50%
Meat share in total dietary energy consumption	n.a.

Health Indicators	
Pop. with sustainable access to improved sanitation - 2006 (WHO)	42%
Life expectancy at birth (years) both sexes - 2006 (WHO)	53
Pop. with access to improved drinking water sources - 2006 (WHO)	57%
Prevalence of HIV among adults aged >= 15 years - 2005 (WHO)	6%

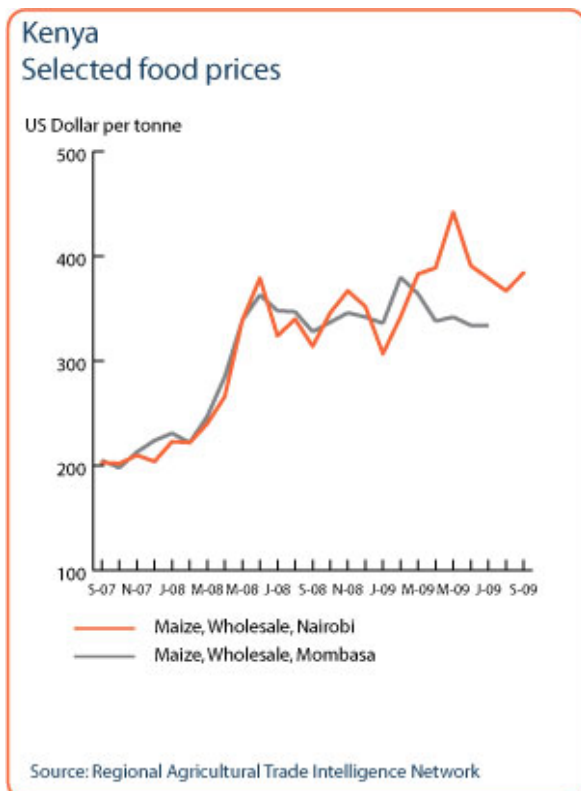
Prices

Cereals: The sustained high food prices at national level are exacerbating food insecurity conditions. Maize prices still remain at above average levels as a consequence of inflated transportation costs for imported maize. The persistent high prices have restricted food access for low-income market dependent households, especially in urban areas where wages have remained comparatively static.

Livestock: The poor body conditions of livestock have led to below normal livestock prices, deteriorating pastoralists' terms of trade and consequently limiting their access to staple foods.

Conflicts and Refugees

The conflict between the Sabaot Land Defence Forcess (SLDF) and the Government remains very violent. Moreover the results of the presidential elections in 2007 were contested and the election violence resulted in widespread displacement. In 2008, Kenya hosted over 1 million refugees.



Source: [GIEWS Country Briefs](#)

Refugees and IDPs	2006	2007	2008
Total in the country	391046	371495	1180088
Total outside the country	6435	9277	762617

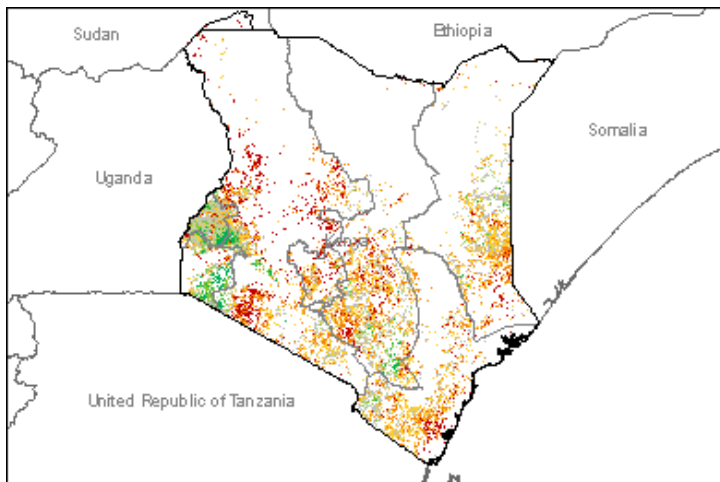
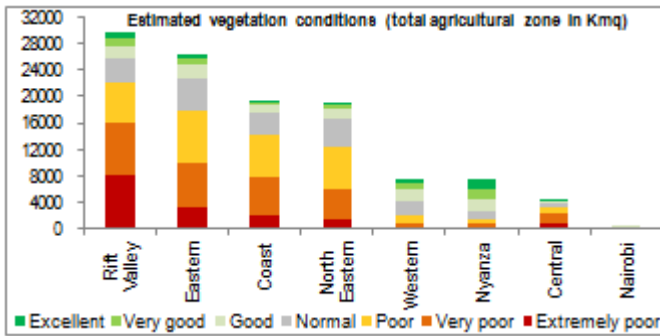
Source: [UNHCR Statistical Online Population Database](#), United Nations High Commissioner for Refugees (UNHCR), Data extracted on 22/10/2009.

Disaster Type (last year)	Date	Location	Alert
Flood	2009-10-20	Malindi - Garsen	1/3
No Earthquakes	-	-	-

Source: [Global Disaster Alert and Coordination System](#) - 3 = 1000 or more people killed or 800000 or more people displaced. 2 = 100 or more people killed or 80000 or more displaced.

Drought and Natural Disasters

Shown below is the estimated vegetation condition of Sept. 2009 with respect to the average of the last 10 years. The vegetation condition is calculated on the agricultural zone defined according to the GLOBCOVER land cover database. Very poor vegetation conditions are observed throughout the country.



Source: JRC MARS – FoodSec

Food Security Situation

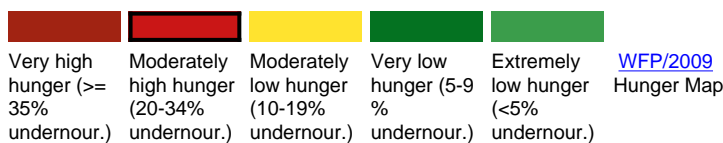
An estimated 3.8 million people in rural areas are highly to extremely food insecure. FAO/GIEWS and FEWSNET agree that, in the short term Kenya is a hunger prone country, while WFP and IFPRI assess the long term situation as alarming and hunger as moderately high.

CURRENT EMERGENCY ASSESMENT



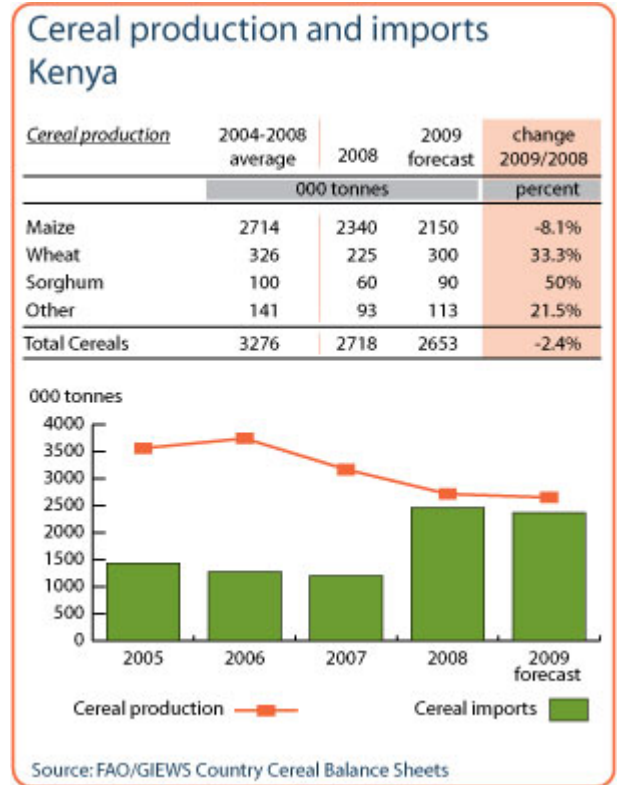
Food insecurity has continued to worsen through the dry season, particularly in the extremely food insecure areas. An estimated 3.8 million people are highly to extremely food insecure, predominantly in the pastoral ...[more](#)

SCALE OF HUNGER



Food Balance Sheet

The domestic availability of cereals has slightly declined from 2007. Import requirements amounted to 2.5 million tonnes in 2008, almost doubling the 1.2 million tonnes of the previous year. The expected 2009 long season maize production is estimated at 1.84 million MT which is 28% below normal levels.



Source: GIEWS Country Briefs

Governance Policies

In 2008, the government implemented the targeted agricultural input subsidies programme, released stocks at subsidised price and reduced taxes. Moreover, in response to drought, the government supplied food aid and cash transfers.

Consumer and market oriented measures	Released stock; Suspended VAT
Producer oriented measures	Productive safety nets; Support to inputs for animal production/fisheries
Trade policy measures	Reduced tariffs and customs fees on imports; Restricted exports
Safety net (increased or introduced)	Targeted input distribution

Market and trade policy measures adopted (as of 1 December 2008)

Current events to watch (Click to see the full report)

No News Found

For more information, contact: Information-for-action@fao.org
Website: www.foodsec.org

Powered By the [GIEWS Workstation](#)

The Linking Information and Decision Making to Improve Food Security Programme is funded by the European Union and implemented by the Food and Agriculture Organization of the United Nations.