

Price Monitoring and Analysis Country Brief

Somalia

October 2009

Key Messages

- Even though prices have declined from 2008 levels, they are still above average; pastoralists are facing unfavourable terms of trade because of drought and poor body conditions.
- Conflict and drought have led to the worst humanitarian crisis the country has faced in nearly two decades. An estimated 3.6 million need aid.
- There is a general agreement that Somalia is facing a food emergency situation. The most vulnerable households are in the central and southern regions and in the capital city.
- Despite government intensions to support producers and consumers, a large part of the population suffers from escalating conflict between the government and rebels.

Background

The total population in Somalia was 8.95 million in 2008 with an annual growth rate of 2%.

Economic Indicators	View Data
Total Population - 2008 (WB)	8953890
Population growth rate - 2008 (WB)	2%
GNI per capita, \$ PPP	n.a.
Population below 1\$ PPP per day	n.a.
Rural population - 2007 (WB)	64%
Agriculture, value added (% of GDP)	n.a.

Food Consumption	
Undernourished Population	n.a.
Cereal share in total dietary energy consumption	n.a.
Meat share in total dietary energy consumption	n.a.

Health Indicators	
Pop. with sustainable access to improved sanitation - 2006 (WHO)	23%
Life expectancy at birth (years) both sexes - 2006 (WHO)	55
Pop. with access to improved drinking water sources - 2006 (WHO)	29%
Prevalence of HIV among adults aged >= 15 years - 2005 (WHO)	0%

Prices

Cereals: Prices have declined since peaking in mid-2008, improving the purchasing power of households and consequently food access, but still remain above average. The depreciated value of the Somali Shilling, compared to an average of the last five years, and an anticipated reduction in imports during the monsoon season, is expected to lead to an inflation of imported food prices impacting food access.

Livestock: The decrease in livestock prices, as a result of poor body conditions, will have a direct negative impact on income and food access.

Natural Disasters, Drought and Conflicts

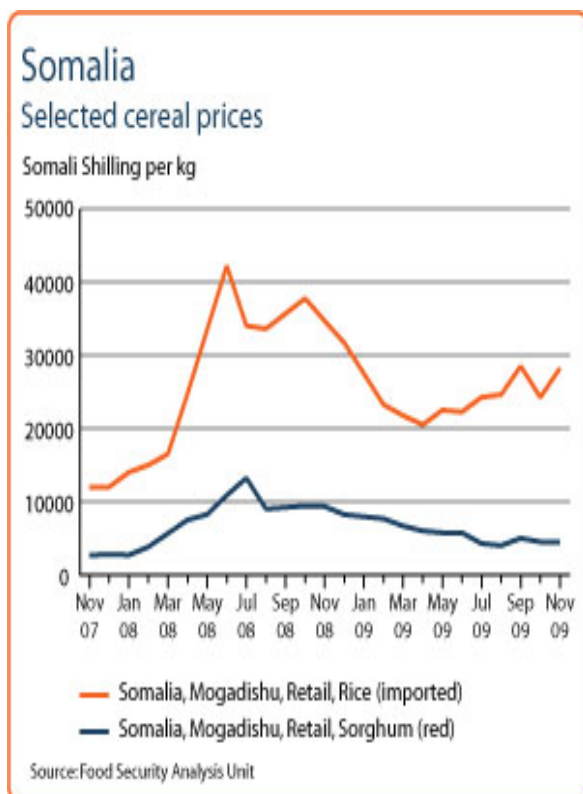
The war over national power between Islamist insurgents and the Transitional Federal Government (TFG) of Somalia continues. The Union of Islamic Courts (UIC) consists of various relatively independent groups, among them the Al-Shabab group and the Hisbul Islam group. Al Shabab now controls most of the southern Somalia. The UN Refugee Agency (UNHCR) estimates that the number of displaced people has reached more than 1.2 million.

Refugees and IDPs	2006	2007	2008
Total in the country	403735	1011824	1289764
Total outside the country	889683	1476007	1860373

Source: [UNHCR](#) Statistical Online Population Database, United Nations High Commissioner for Refugees (UNHCR), Data extracted on 22/10/2009.

Disaster Type (last year)	Date	Location	Alert
No Floods	-	-	-
No Earthquakes	-	-	-

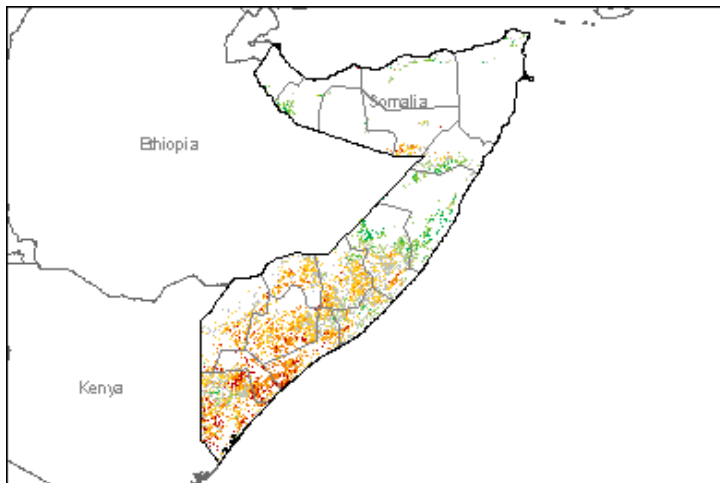
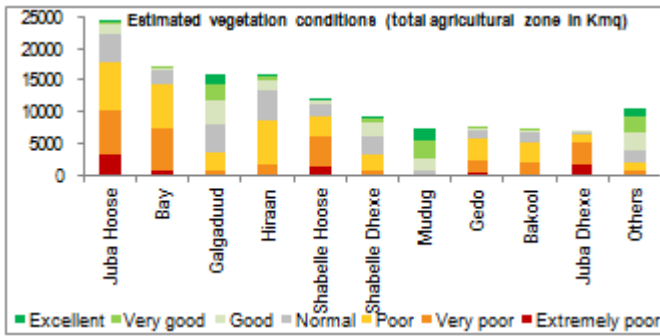
Source: [Global Disaster Alert and Coordination System](#) - 3 = 1000 or more people killed or 800000 or more people displaced. 2 = 100 or more people killed or 80000 or more displaced.



Source: [GIEWS Country Briefs](#)

Vegetation Condition

Estimated vegetation condition in October 2009 with respect to the average of the last 10 years. The vegetation condition is calculated on the agricultural zone defined according to the GLOBCOVER land cover database. The charts report the areas of each vegetation condition class by province and have to be cautiously interpreted, in particular if in the dry season.



Source: JRC MARS – FoodSec

Food Security Situation

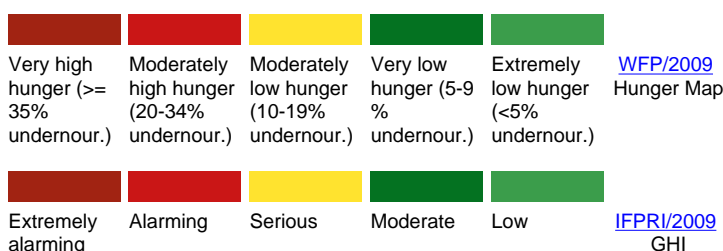
According to the UN, an estimated 3.6 million people are in need of emergency assistance, especially in the southern and central regions and in the capital city. According to GIEWS Somalia is facing exceptional shortfalls in food production in the short term; FEWSNET describes the country as highly and extremely food insecure.

CURRENT EMERGENCY ASSESMENT



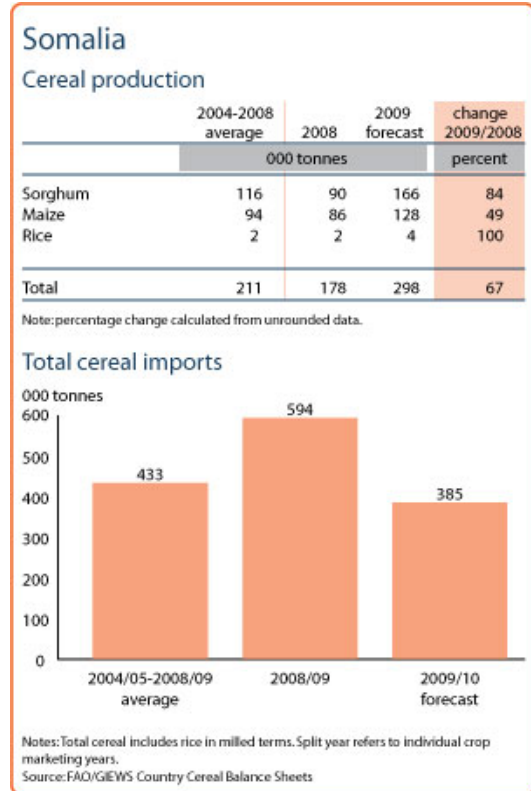
The food security situation in all livelihoods of Somalia remains high or extreme, as classified during the post Gu '09 assessment (June-July '09), though the early Deyr rains have begun to improve the situation in [...more](#)

SCALE OF HUNGER



Food Balance Sheet

Maize and sorghum production of the 2009 "gu" season is estimated well below average in central and northwest regions due to below average rainfall, whereas in the south, above average production of coarse grains is expected, as a result of favourable "gu" rains. Overall cereal production has increased; hence the 2009/2010 import requirements (595,000 tonnes) are decreasing from last year (720,000 tonnes).



Source: GIEWS Country Briefs

Government Policies

In Somalia, policy implementation is undermined by armed conflict and political instability.

Consumer and market oriented measures	Storage facilities
Producer oriented measures	Irrigation; Market infrastructure development; Inputs for animal/ fisheries production
Trade policy measures	n.a.
Safety net (increased or introduced)	Input distribution

Different sources

Current events to watch (Click to see the full report)

- [SOMALIA: Isse Ahmed, "They tied me to a tree by my hands and lef...](#)
- [ETHIOPIA-SOMALIA: Puntland begins repatriating Ethiopian migrant...](#)
- [SOMALIA: Human trafficking on the increase](#)
- [SOMALIA: New taskforce to check AWD in Somaliland](#)
- [SOMALIA: Traders help keep the country fed](#)

For more information, contact: Information-for-action@fao.org
Website: www.foodsec.org

Powered By the [GIEWS Workstation](#)