

Price Monitoring and Analysis Country Brief

Sudan

October 2009

Key Messages

- **Cereal prices well above historical average due to production shortfalls and disruptions in trade.**
- **Food security is affected by multiple shocks including high intensity conflict, widespread drought and localized floods.**
- **Different agencies assess the food security situation in Sudan as severe or worrisome.**
- **An estimated 5.9 million IDPs, returnees, agro-pastoralists and chronically food insecure people currently in need of food assistance.**

Background

The total population in Sudan was 41.34 million in 2008, with an annual growth rate of 2%. About 21% of the population was undernourished in 2005.

Economic Indicators	View Data
Total Population - 2008 (WB)	41347723
Population growth rate - 2008 (WB)	2%
GNI per capita, \$ PPP - 2008 (WB)	1930
Population below 1\$ PPP per day	n.a.
Rural population - 2007 (WB)	57%
Agriculture, value added (% of GDP) - 2008 (WB)	25%

Food Consumption	
Undernourished Population - 2005 (FAO)	21%
Cereal share in total dietary energy consumption - 2005 (FAO)	49%
Meat share in total dietary energy consumption - 2005 (FAO)	5%

Health Indicators	
Pop. with sustainable access to improved sanitation - 2006 (WHO)	35%
Life expectancy at birth (years) both sexes - 2006 (WHO)	60
Pop. with access to improved drinking water sources - 2006 (WHO)	70%
Prevalence of HIV among adults aged >= 15 years - 2005 (WHO)	1%

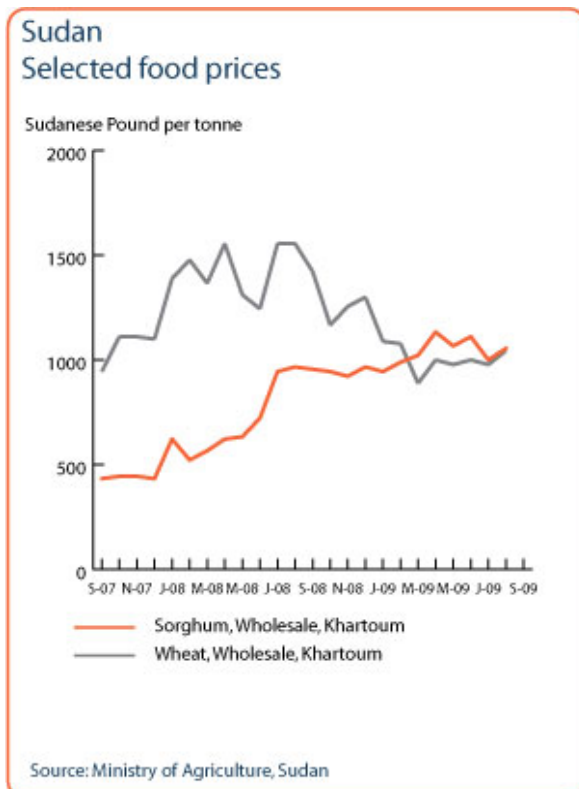
Prices

Cereals: Prices of cereals have stabilised following the sharp increase in mid-2008. However, prices still remain at above average levels. Sorghum prices in Khartoum averaged SDG 102 per 90kg in April 2009: 82% above last year's prices. In contrast, wheat prices in Khartoum have decreased by 36% since April 2008 to SDG 90 per 90kg. This decline is clearly correlated to international price movements, due to Sudan's reliance on imported wheat and also reflects the improved domestic wheat harvest.

Livestock: Prices in pastoral areas have decreased sharply as households are selling off cattle to buy food.

Conflicts and Refugees

The conflict in Darfur and South Sudan is a major cause of food insecurity. It has disrupted food production and resulted in widespread displacement and a refugee crisis. With continuous and high intensity conflicts and over a million IDPs, Sudan is one of the largest recipients of UN peace-keeping and humanitarian assistance.



Source: [GIEWS Country Briefs](#)

Refugees and IDPs	2006	2007	2008
Total in the country	1622222	1695573	1499683
Total outside the country	2124513	2007976	1749536

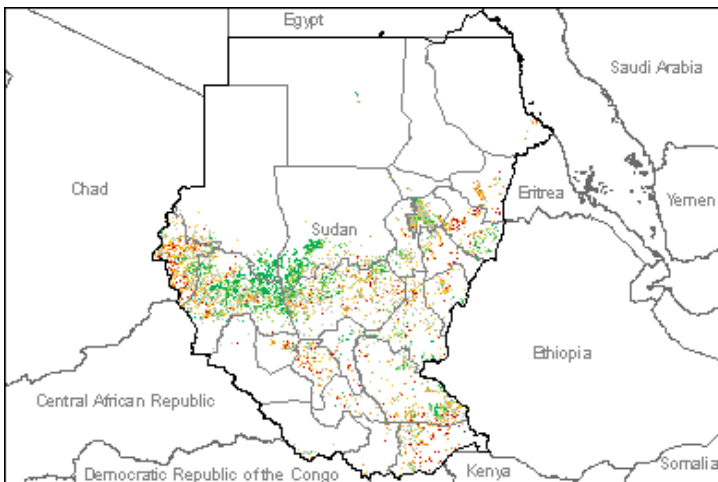
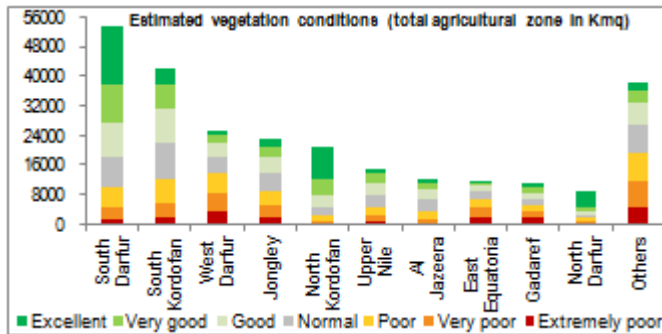
Source: [UNHCR Statistical Online Population Database](#), United Nations High Commissioner for Refugees (UNHCR), Data extracted on 22/10/2009.

Disaster Type (last year)	Date	Location	Alert
Flood	2009-08-16	Khartoum	2/3
No Earthquakes	-	-	-

Source: [Global Disaster Alert and Coordination System](#) - 3 = 1000 or more people killed or 800000 or more people displaced. 2 = 100 or more people killed or 80000 or more displaced.

Drought and Natural Disasters

Shown below is the estimated vegetation condition of Sept. 2009 with respect to the average of the last 10 years. The vegetation condition is calculated on the agricultural zone defined according to the GLOBCOVER land cover database. West and South Darfur, East Equatoria, South Kordofan are among the worst affected.



Source: JRC MARS – FoodSec

Food Security Situation

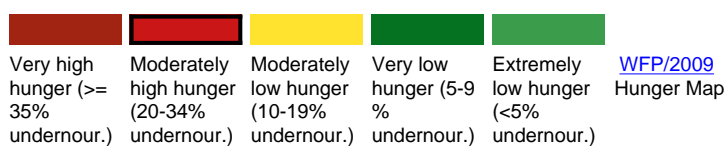
An estimated 5.9 million people in Sudan are currently in need of food assistance. There is consensus among different agencies in terms of evaluating the food security situation of Sudan. In the short term Sudan is facing real emergencies and in the long term hunger is described as serious.

CURRENT EMERGENCY ASSESMENT



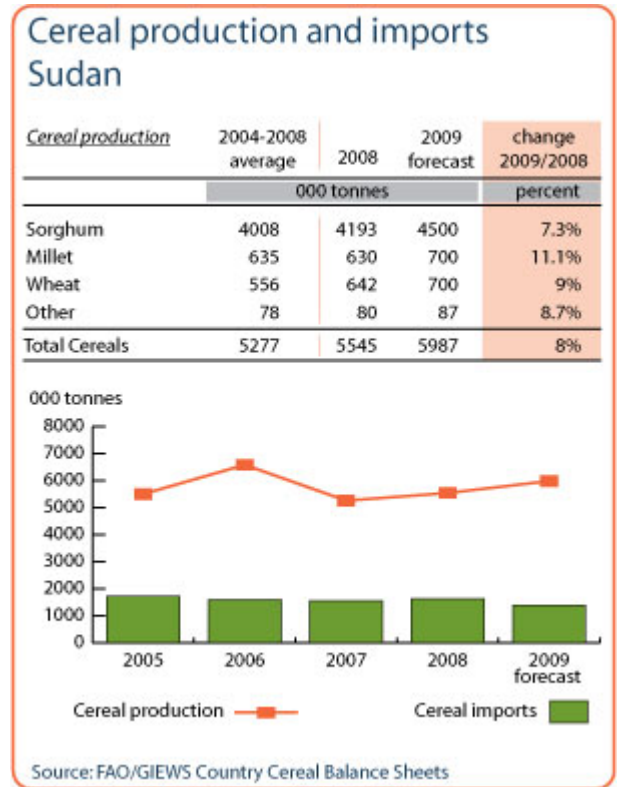
Food insecurity is showing signs of improvement as the consumption of green crops has been reported, signaling the arrival of the long delayed harvest of early maturing crops. The main harvest is likely from the end of...[more](#)

SCALE OF HUNGER



Food Balance Sheet

The 2008/09 wheat harvest was estimated at 700,000 tonnes, representing an increase of 19% compared to 2007/08. Overall, cereal production for 2008/09 was estimated to reach 5.6 million tonnes, 7% higher than the 2007/08 crop. However, the import requirement of cereals was estimated at 1.7 million tons for 2009.



Source: GIEWS Country Briefs

Governance Policies

The government resumed the sale of subsidised sorghum and it is retailed at approximately SDG 65 per 90kg (February 2009), approximately 30% below the market price. Policies in 2008 focused on short-term emergency measures, including banning grain exports. Sudan has yet to introduce formal safety net programs.

Consumer and market oriented measures	Suspended VAT; Admin. price control measures
Producer oriented measures	Encouraged private investment in agriculture; Irrigation
Trade policy measures	n.a.
Safety net (increased or introduced)	n.a.

Market and trade policy measures adopted (as of 1 December 2008)

Current events to watch (Click to see the full report)

- [SUDAN: Southerners still besieged by suspected LRA fighters](#)
- [In Brief: Sudan polls put off by a week](#)
- [SUDAN: Increasing hunger could fuel conflict in south](#)
- [SUDAN: Kala azar "epidemic" in south](#)
- [SUDAN: The Nuba Mountains - straddling the north-south divide](#)

For more information, contact: Information-for-action@fao.org
Website: www.foodsec.org

Powered By the **GIEWS Workstation**